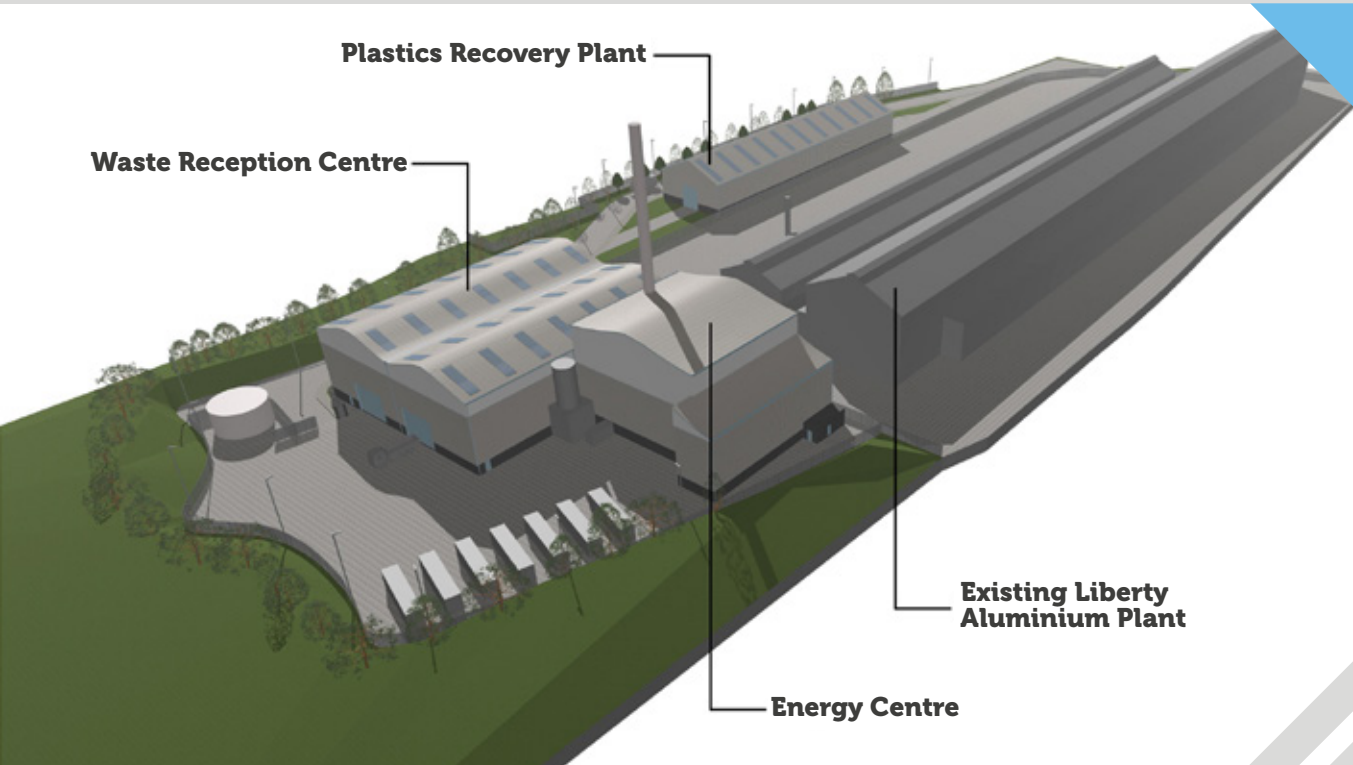




ENERGY & RESOURCE PARK



COMMUNITY NEWSLETTER MAY 2020

Power Generation Midlands is looking to develop an Energy & Resource Park on land next to Liberty Aluminium in Kidderminster.

It will generate low carbon electricity and also provide a sustainable solution for dealing with plastic waste preventing it ending up in landfill, exported abroad or in our oceans.

We want to get your views on the plans as we pull together a planning application for the Energy & Resource Park which we expect to submit to Worcestershire County Council in the Summer.

Inside this newsletter you will find more information on our plans and a questionnaire where you can tell us what you think.

About Power Generation Midlands

Power Generation Midlands is a new company created to bring forward the Energy & Resource Park. The individuals involved have a long track record of working in waste management and recycling in the Midlands and have brought together an experienced team to deliver the project.

www.powergenerationmidlands.co.uk

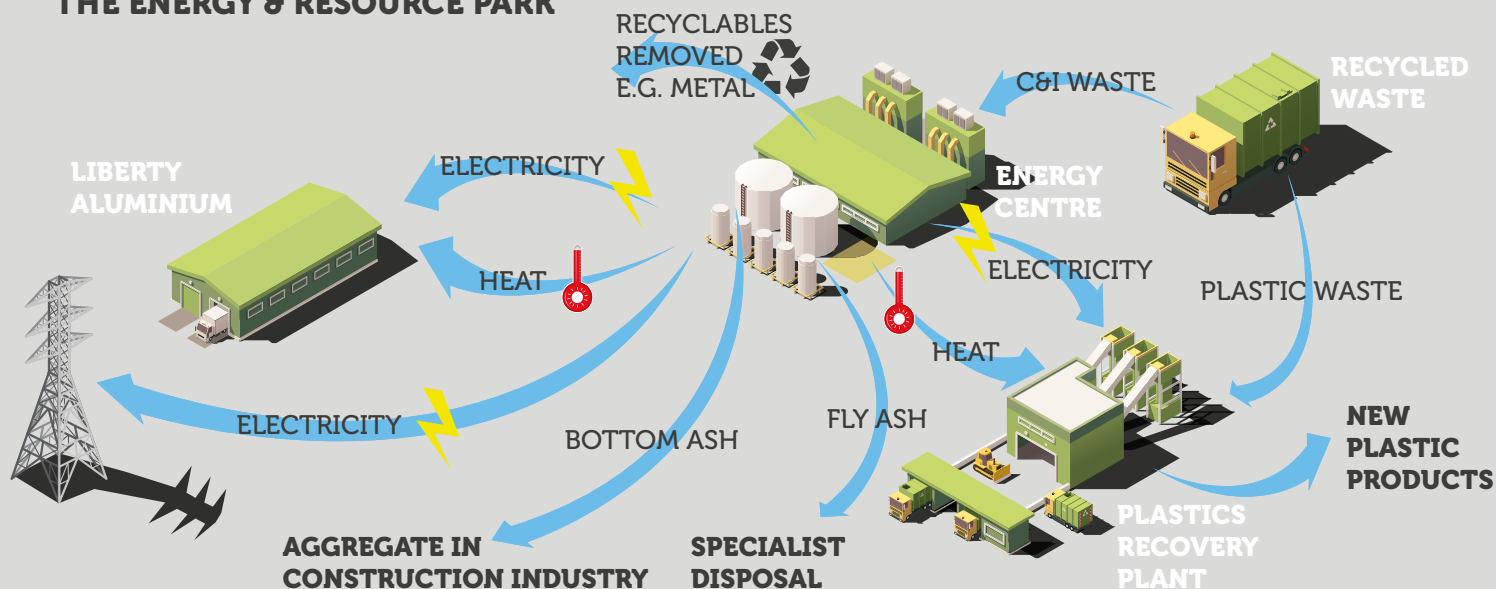
THE SITE

We are proposing to build the Energy & Resource Park in an industrial area next to the Liberty Aluminium foundry on Stourport Rd in Kidderminster.

The brownfield site is currently empty but has been used for waste uses in the past, having once been a landfill site.



THE ENERGY & RESOURCE PARK



The Energy & Resource Park will include an Energy Centre and a Plastics Recovery Plant.

The Energy Centre will take around 75,000 tonnes a year of commercial and industrial (C&I) waste left after recycling from the local area. The waste is used as a fuel to generate low carbon electricity and heat which could be used to power local businesses including the Liberty Aluminium foundry next door and also provide electricity to the National Grid.

The Plastics Recovery Plant will take around 30,000 tonnes of plastic waste that would otherwise end up in landfill or exported overseas. The plastic waste (such as plastic bags, film and containers) is processed through friction plates which breaks it down into granules. This material can then be used to create new products like garden furniture and decking.

We are also looking at including education facilities which will enable local schools and others to come and learn about what happens at the Energy & Resource Park.

THE WASTE HIERARCHY

The waste hierarchy ranks waste management options according to what is best for the environment. It gives top priority to preventing waste in the first place. When waste is created, it gives priority to preparing it for re-use, then recycling, then recovery, and last of all disposal (e.g. landfill).

When waste arrives at the Energy & Resource Park it will already have had recyclable materials removed. It will take waste where the only other realistic option is landfill, creating a value from it rather than it just being buried in the ground.



POWERING UP LIBERTY ALUMINUM

The Liberty Aluminium foundry has been on Stourport Road for five years and employs over 70 people. The company has a long history of producing engine components and we are in discussions with them about providing a stable supply of electricity and heat from the Energy & Resource Park. This could enable Liberty to expand its operations in Kidderminster which could see an investment of £8 million and over 100 jobs.

LOCAL BENEFITS



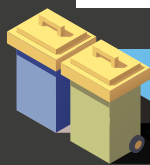
Divert around 105,000 tonnes of waste from landfill every year

Generate low carbon electricity and heat, helping to reduce reliance on fossil fuels



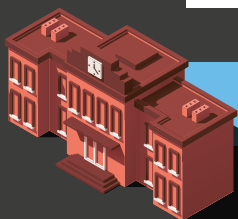
We hope to create at least 25 jobs at the Energy & Resource Park and 60 jobs during construction

Potential to provide energy directly to local businesses such as Liberty Aluminium which could see further investment and jobs



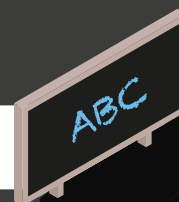
Turn 30,000 tonnes of plastic waste into a material that can be used for new products

Expected investment of over £30 million in the local area



Additional income for the Council through business rates every year

Education facility for local schools



HOW CAN I HAVE MY SAY?

Usually we'd want to hold an event where you can chat to the project team and ask any questions, however during the current pandemic we're having to adapt our approach. There are still a number of ways you can get involved:

- Fill in the questionnaire attached to this newsletter and pop it in the post (it's free!)
- Take a look at our website **www.powergenerationmidlands.co.uk** where you can also fill in the questionnaire or ask a question
- Get in touch using the contact details on the back of this newsletter

YOUR QUESTIONS ANSWERED

If you can't find the answer to your question here visit our website where we've lots more.

Where will the waste come from?

The Energy & Resource Park will take non-hazardous commercial and industrial waste from the local area. We are already talking to local suppliers who currently send their waste to landfill that are interested in sending it to us.

Will there be an impact on local roads?

We expect around 25 deliveries a day, which will be spread over 24 hours to reduce deliveries at peak times. A transport assessment will be submitted to Worcestershire County Council with the planning application showing how we will manage any impact on local roads.

How safe is energy recovery?

The Energy Centre will use proven technology and the process is closely regulated by the Environment Agency. Before it can operate the Energy Centre will need an Environmental Permit and it will have to meet very strict emissions limits. Emissions data is monitored continually with safety controls designed to shut the plant down if it exceeds allowed levels.

Will it smell?

All deliveries will be in enclosed vehicles and materials will be tipped, stored and processed in sealed buildings with odour control systems in place. We will only store a minimal amount of waste at the site, so it is used within a couple of days of arriving.

Will it detract from recycling?

When waste arrives at the site it will already have had recyclable materials removed. The Energy & Resource Park will take waste where the only other realistic option is landfill, either using it to generate energy or to create a material that can be used to make new plastic products.

NEXT STEPS

We want to get your feedback as we prepare a planning application for the Energy & Resource Park. The consultation closes on 26th June 2020 so please send us your comments before then. Following the consultation, we plan to submit a planning application to Worcestershire County Council in the Summer and expect a decision before the end of the year. If we are successful in securing a planning consent the Energy & Resource Park would take around two years to build.

GET IN TOUCH

Call 0800 689 1095

Email info@powergenerationmidlands.co.uk

Website www.powergenerationmidlands.co.uk

**Post (no stamp required)
Freepost HAVE YOUR SAY**

HAVE YOUR SAY

Please complete this questionnaire, tear off the slip, fold in half, moisten and glue together. Then just pop it in the post – no need to add a stamp!

Need more space? You can write to us using the contact details on the back of the newsletter or fill the questionnaire in online.

All consultation responses must be submitted by 26th June 2020.

Q1. Do you agree that we should be looking at alternatives to landfill for the waste left after recycling?

☐ Yes ☐ No ☐ Don't know

Please provide any comments here

Q2. What is your view on using waste that would otherwise end up in landfill to create low carbon energy?

Q3. What is your view on the Plastics Recovery Plant which will create a material from plastic waste that can be used to make new products?

Q4. Which of the following aspects of the proposal are you most interested in? (Tick up to three)

- | | |
|---|---|
| <input type="checkbox"/> Transport and access | <input type="checkbox"/> How the development looks |
| <input type="checkbox"/> Environment | <input type="checkbox"/> Diverting waste from landfill |
| <input type="checkbox"/> Jobs and investment | <input type="checkbox"/> Using a material created from plastic waste to create new products |
| <input type="checkbox"/> Generating low carbon energy | |

Please expand on your choices here

Q5. Please use this space to make any general comments

ABOUT YOU

Name

Address

Email

Phone

Age: ☐ Under 20 ☐ 20 – 35 ☐ 36 – 50 ☐ 51 – 65 ☐ Over 65

This information is optional but will help us to analyse the information you have provided more effectively and enable us to keep you updated on the project in the future.

Would you like to be kept updated about the project?

If so, please state how:

Yes / No

☐ Email ☐ Post

Providing your contact details allows Font Communications Ltd, on behalf of Power Generation Midlands, to assess the reach of the consultation and log responses. Should you select to be kept informed, your email address and telephone number will allow Font to keep you updated on plans for Power Generation Midlands only. Copies of the feedback received may be made available, in due course, to Worcestershire County Council. We will, however, request that your personal details are not placed on the public record. Your personal details will be held securely by Font Communications Ltd and Power Generation Midlands in accordance with the GDPR act 2018 and will not be passed to any additional third parties.



Freepost HAVE YOUR SAY